

# NFB 100

## DIAPHRAGM LIQUID PUMP



NFB 100 KPDCB-4

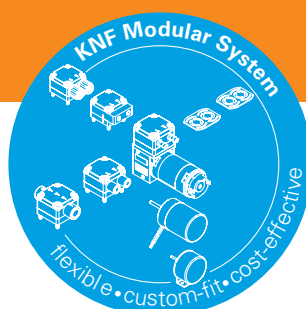
### ADVANTAGES

- Self priming and excellent for pressure
- Extreme chemical resistance
- Dry running, durable and maintenance free
- Low pulsation

### POSSIBLE AREAS OF USE

- Analysers
- Laboratory
- Cleaning industry
- Printing

Please visit our website  
[www.knf.com](http://www.knf.com)  
 to get more information.



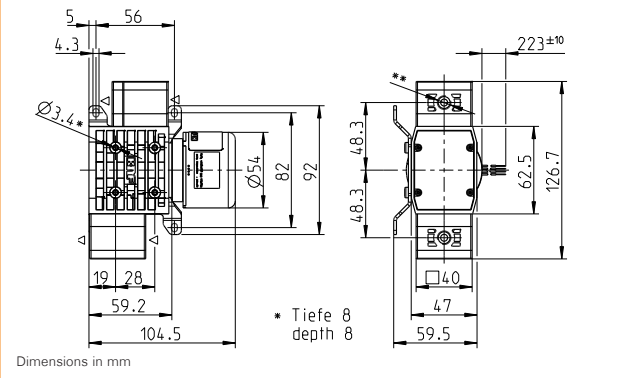
PERFORMANCE DATA			
Series model	NFB 100 DCB-4		
Material options	KP	KT	TT
Pump head	PP		PVDF
Diaphragm	PTFE		
Valves	EPDM		FFKM
Flow rate at atm. pressure (l/min)	2 x 1.3		
Suction height (mWg)	3		
Pressure head (mWg)	10		
Permissible ambient air (°C)	5 to 40		
Permissible liquid temperature (°C)	5 to 80		
Weight (g)	640		
IP protection factor	30		
ELECTRICAL DATA			
Operating voltage (V)	12	24	
Power consumption (W)	15	15	
I load max. (A)	1.25	0.63	

# NFB 100 DCB-4

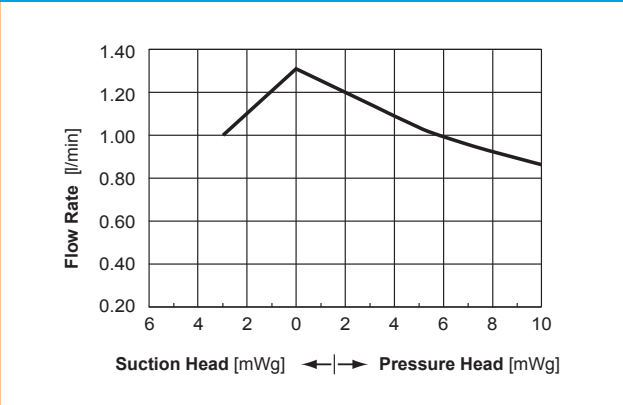
## PERFORMANCE DATA

Series model	Flow rate at atm. pressure (l/min)	Max. suction height (mWg)	Max. pressure head (mWg)
NFB 100 DCB-4	2 x 1.3	3	10

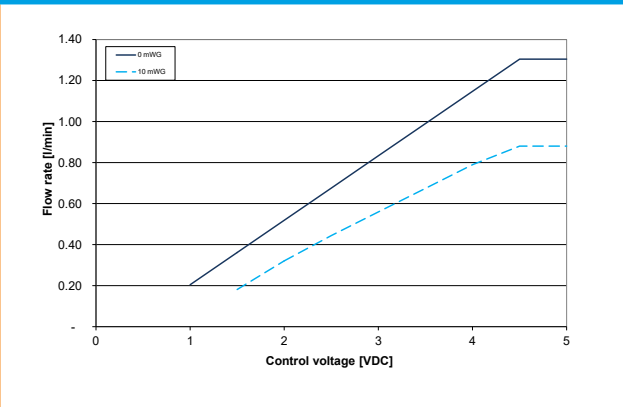
## NFB 100 DCB-4



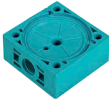


## NFB 100 DCB-4 FLOW CURVE (PER HEAD)



## NFB 100 DCB-4 CONTROL CURVE (PER HEAD)






OPTIONS		
Description	Illustration	Details
Motors		Various voltage options, higher and lower service life
Electrical connections		Molex, AMP etc.
Hydraulic connections		G / NPT internal thread.



**NSF National Sanitary Foundation**

This certification will confirm that all of the pumps with the code .51 are certified for the use with foods/consumables.

ACCESSORIES		
Description	Illustration	Details
Diaphragm pressure control valve		The pressure control valve can be used for a more accurate control of flow against a fluctuating back pressure, metering into a vacuum and from a pressurised system.
Pulsation damper		This very versatile pulsation damper reduces the vibration in hoses and pipes and it helps to remove pulsation which is preventing the system from functioning correctly.
Tubing		E.g. parallel connection of heads for low pulsation.

The performance values for the series models shown on this data sheet were determined under test conditions. The actual performance values may differ and depend in particular on the usage conditions and therefore on the specific application, on the parameters of the components involved in the user's system and on any technical modifications carried out which deviate from the standard configuration or the as delivered condition.

If individual designs have been created for specific customers on the basis of series models, other technical performance data may apply. Before operation begins, the relevant operating instructions and/or assembly or installation instructions should be read and the safety information contained in these instructions should be noted. KNF reserves the right to make changes to the product and the associated documentation without prior notice to the customer.



[www.knf.com](http://www.knf.com)